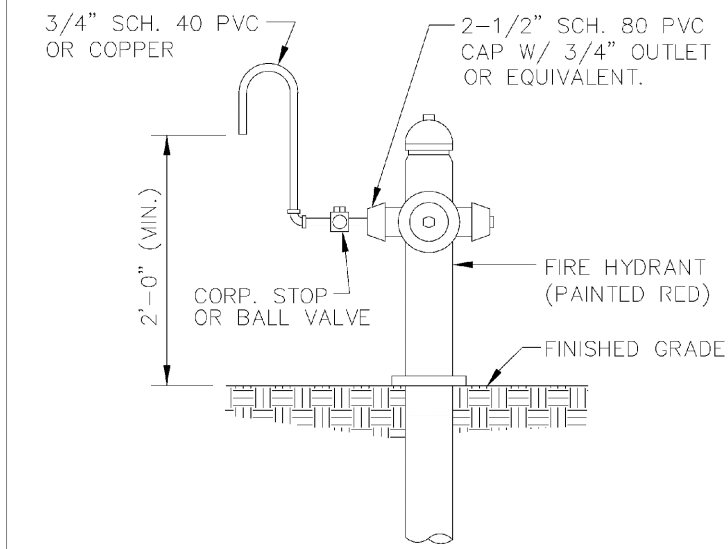


SAMPLE POINT (MAIN)

ALL D.I.P. TO BE PAINTED
BLUE ON TOP HALF OF PIPE.

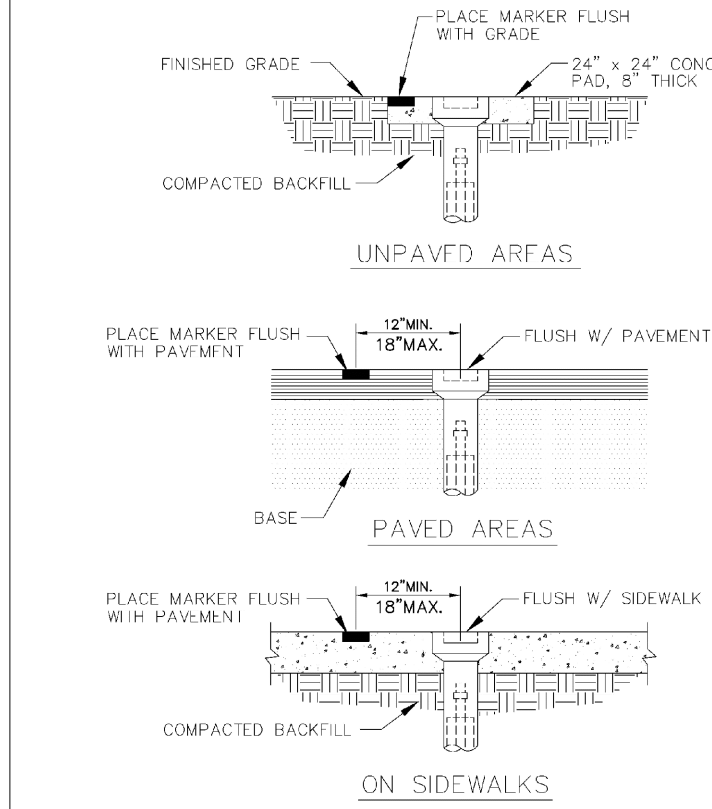
ENGINEERING STANDARDS 2022			
REVISIONS	BY	DATE	ENGINEERING DIVISION
S.S.	04-2008		CITY OF POMPAÑO BEACH
S.S.	05-2009		
S.S.	11-2007		
S.S.	09-2013		
SCALE: N.T.S.			100-1



SAMPLE POINT (HYDRANT)

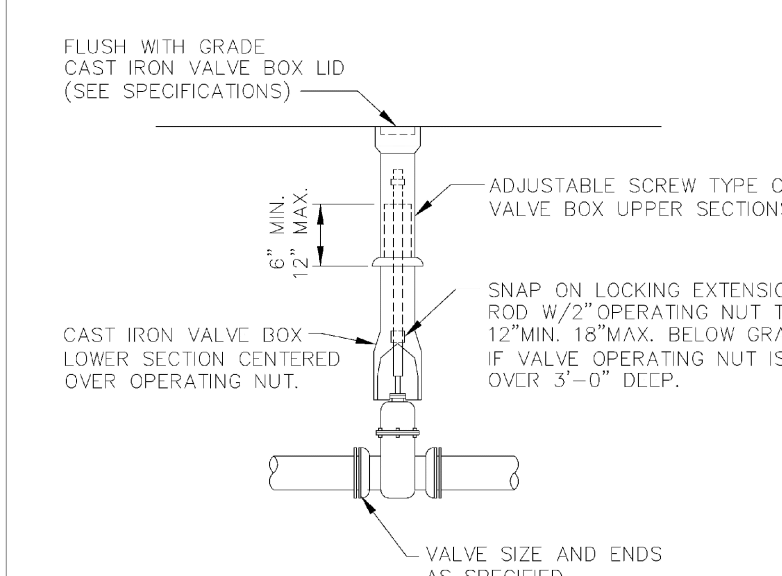
ALL POMPAÑO BEACH HYDRANTS SHALL BE PAINTED RED.

ENGINEERING STANDARDS 2022			
REVISIONS	BY	DATE	ENGINEERING DIVISION
S.S.	04-2008		CITY OF POMPAÑO BEACH
S.S.	05-2009		
S.S.	11-2007		
S.S.	09-2013		
SCALE: N.T.S.			101-1



VALVE BOX SETTINGS

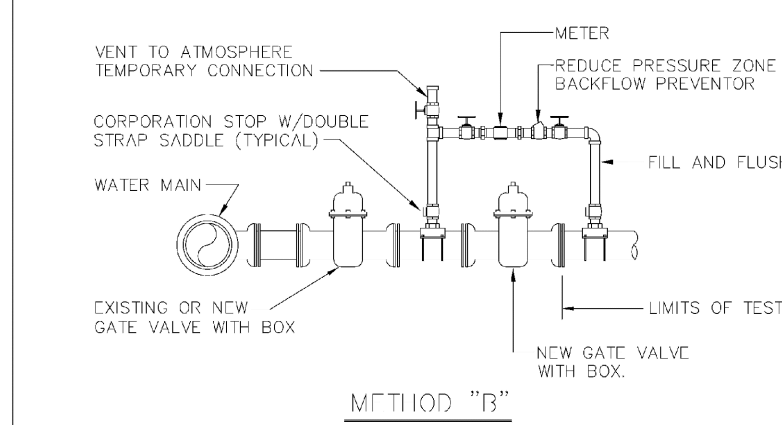
ENGINEERING STANDARDS 2022			
REVISIONS	BY	DATE	ENGINEERING DIVISION
S.S.	04-2008		CITY OF POMPAÑO BEACH
S.S.	05-2009		
S.S.	11-2007		
S.S.	09-2013		
SCALE: N.T.S.			102-1



GATE OR PLUG VALVE SETTING

ALL D.I.P. TO BE PAINTED
BLUE ON TOP HALF OF PIPE.

ENGINEERING STANDARDS 2022			
REVISIONS	BY	DATE	ENGINEERING DIVISION
S.S.	04-2008		CITY OF POMPAÑO BEACH
S.S.	05-2009		
S.S.	11-2007		
S.S.	09-2013		
SCALE: N.T.S.			103-1



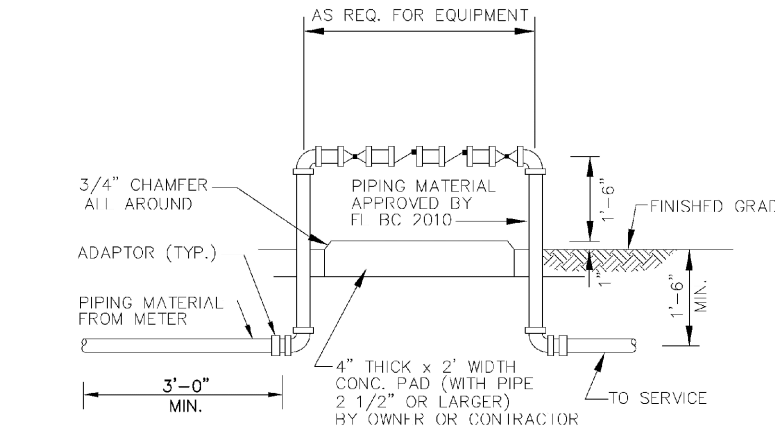
METHOD "B"

- NOTES:
1. WATER MAIN TO BE PRESSURE TESTED AND DISINFECTED ACCORDING TO BROWNS COUNTY PUBLIC HEALTH UNIT REGULATIONS, AWWA, AND MUNICIPAL ORDINANCES IN EFFECT.
 2. BACTERIOLOGICAL TESTS ARE TO BE PERFORMED BY THE CONTRACTOR AND IN AN APPROVED TESTING LABORATORY.
 3. REMOVE TEMPORARY CONNECTION AT SADDLE ON NEW MAINS AFTER FILLING AND FLUSHING HAS BEEN COMPLETED AND REPLACE WITH BRASS PLUG.
 4. PROVIDE ALL NECESSARY THRUST BLOCKS OR OTHER RESTRAINTS.
 5. FILLING AND FLUSHING LOCATIONS SHALL BE COORDINATED BY THE CONTRACTOR, ENGINEER, AND CITY.
 6. VENT TO ATMOSPHERE SHALL REMAIN OPEN DURING ALL PHASES OF PRESSURE TESTING.
 7. AFTER COMPLETION FILL AND FLUSH CONNECTION.
 8. USE MEGALUGS AT ALL PIPE JOINTS.

FILLING AND FLUSHING CONNECTION

ALL D.I.P. TO BE PAINTED
BLUE ON TOP HALF OF PIPE.

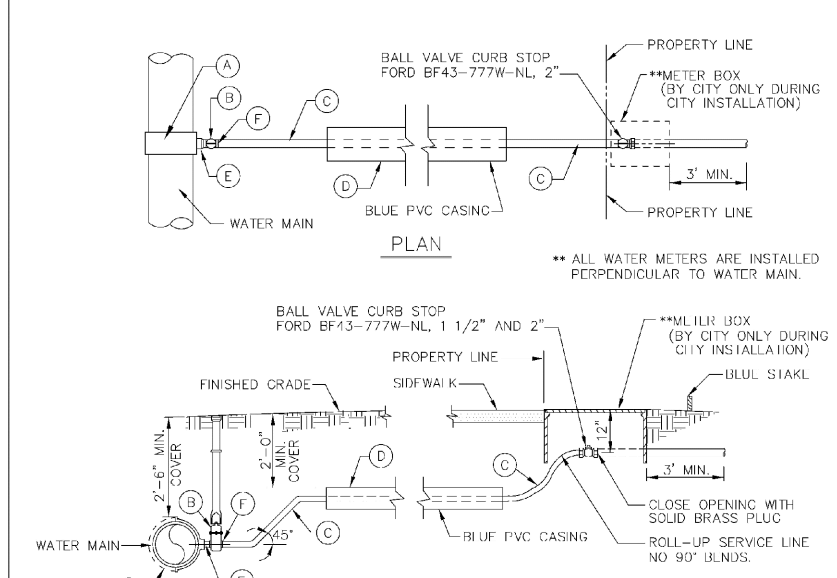
ENGINEERING STANDARDS 2022			
REVISIONS	BY	DATE	ENGINEERING DIVISION
S.S.	04-2008		CITY OF POMPAÑO BEACH
S.S.	05-2009		
S.S.	11-2007		
S.S.	09-2013		
SCALE: N.T.S.			104-1



BACKFLOW PREVENTER

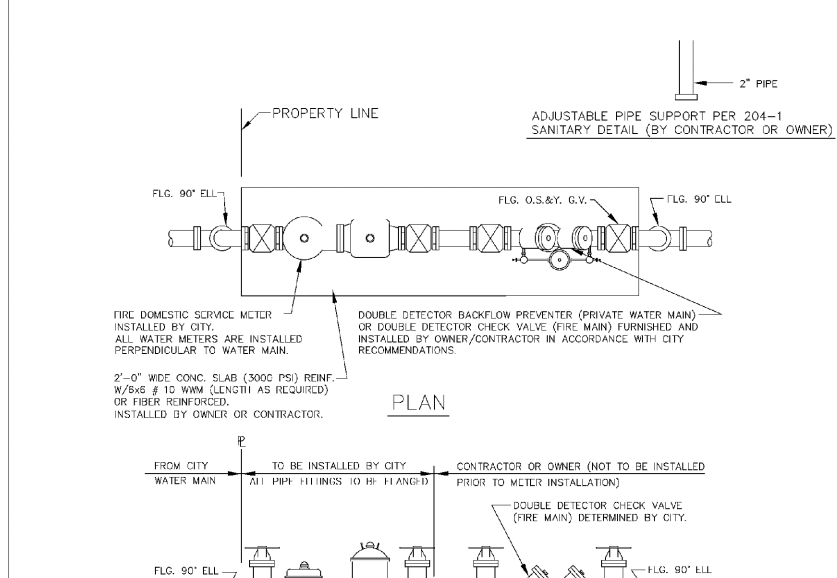
USE MEGALUGS AT ALL PIPE JOINTS.
PLEASE SEE METER INSTALL DIMENSION LIST ON STANDARD NO. 106-4
SMALL UNITS UN-SUPPORT SUPPORT

ENGINEERING STANDARDS 2022			
REVISIONS	BY	DATE	ENGINEERING DIVISION
S.S.	04-2008		CITY OF POMPAÑO BEACH
S.S.	05-2009		
S.S.	11-2007		
S.S.	09-2013		
SCALE: N.T.S.			106-1



TYPICAL 1 1/2" AND 2" WATER SERVICE

ENGINEERING STANDARDS 2022			
REVISIONS	BY	DATE	ENGINEERING DIVISION
S.S.	04-2008		CITY OF POMPAÑO BEACH
S.S.	05-2009		
S.S.	11-2007		
S.S.	09-2013		
SCALE: N.T.S.			107-2



FIRE ONLY METER AND BACKFLOW DEVICE DETAILS

- NOTES:
1. THE BACKFLOW PREVENTER FOR THE BY-PASS SHALL BE DESIGNED BY THE CONTRACTOR.
 2. PLEASE NOTE THAT WATER METERS 3" AND LARGER ARE SUBJECT TO AN APPROXIMATE ORDER LEAD TIME OF 60 TO 75 BUSINESS DAYS AFTER FULL PAYMENT. PLEASE CONTACT CUSTOMER SERVICE AT 954-786-4637 TO ARRANGE FOR METER PROCUREMENT AND INSTALLATION. LARGE METERS MUST BE AT MINIMUM ORDERED PRIOR TO INITIAL INSPECTIONS.
 3. USE MEGALUGS AT ALL PIPE JOINTS.
 4. PLEASE SEE METER INSTALL DIMENSION LIST ON STANDARD NO. 106-4.

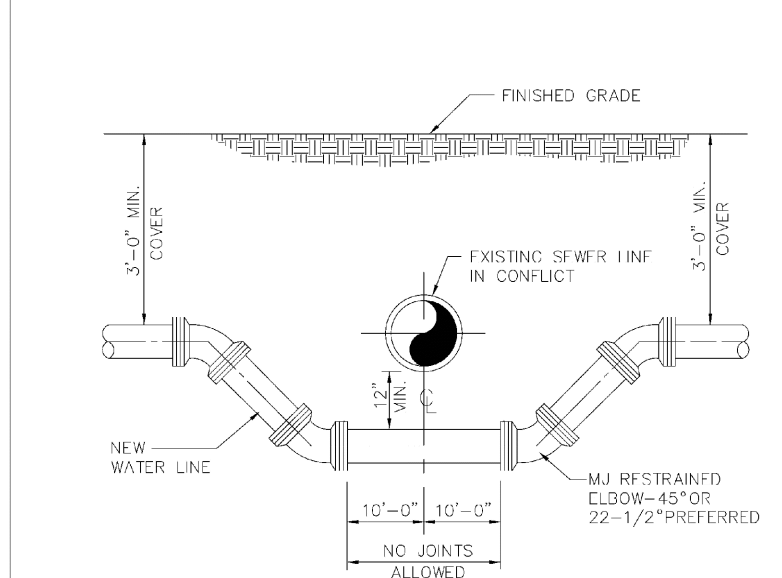
ENGINEERING STANDARDS 2022			
REVISIONS	BY	DATE	ENGINEERING DIVISION
S.S.	04-2008		CITY OF POMPAÑO BEACH
S.S.	05-2009		
S.S.	11-2007		
S.S.	09-2013		
SCALE: N.T.S.			108-3

FIRE METERS - 3" & 4" VALVES, GASKETS & METER			
NEPTUNE MATCH TO LUBRICANT	SIZE	VALVES (2)	GASKETS (2)
3" w/ 4" x 3" Reducer**	18"	12"	30"
4"	18"	12"	27 1/2"
6"	21"	12"	33"
8"	25"	12"	38"
10"	28"	12"	41"
12"	30"	12"	43 1/2"
FIRE 8" Domestic Water Service Meters - TEES, GASKETS & METER			
NEPTUNE MATCH TO LUBRICANT	SIZE	TEES (2)	VALVES (2)
3" w/ 4" x 3" Reducer**	18"	12"	30"
4"	18"	12"	27 1/2"
6"	21"	12"	33"
8"	25"	12"	38"
10"	28"	12"	41"
12"	30"	12"	43 1/2"

*All fittings, valves and meters are flanged & all dimensions are from face of flange to face of flange.

NOTE: PLEASE NOTE THAT WATER METERS 3" AND LARGER ARE SUBJECT TO AN APPROXIMATE ORDER LEAD TIME OF 60 TO 75 BUSINESS DAYS AFTER FULL PAYMENT. PLEASE CONTACT CUSTOMER SERVICE AT 954-786-4637 TO ARRANGE FOR METER PROCUREMENT AND INSTALLATION. LARGE METERS MUST BE AT MINIMUM ORDERED PRIOR TO INITIAL INSPECTIONS.

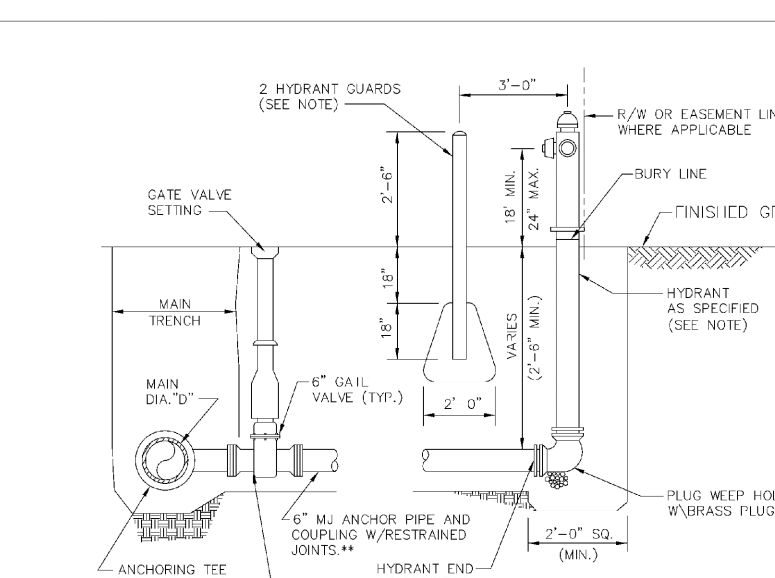
ENGINEERING STANDARDS 2022			
REVISIONS	BY	DATE	ENGINEERING DIVISION
S.S.	04-2008		CITY OF POMPAÑO BEACH
S.S.	05-2009		
S.S.	11-2007		
S.S.	09-2013		
SCALE: N.T.S.			106-4



TYPICAL CONFLICT DETAIL

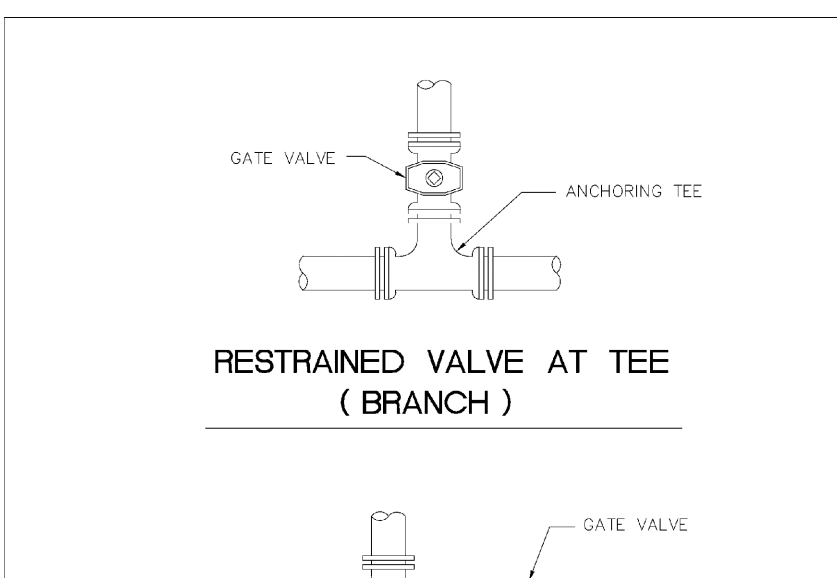
USE MEGALUGS AT ALL PIPE JOINTS.
ALL D.I.P. TO BE PAINTED
BLUE ON TOP HALF OF PIPE.

ENGINEERING STANDARDS 2022			
REVISIONS	BY	DATE	ENGINEERING DIVISION
S.S.	04-2008		CITY OF POMPAÑO BEACH
S.S.	05-2009		
S.S.	11-2007		
S.S.	09-2013		
SCALE: N.T.S.			108-1

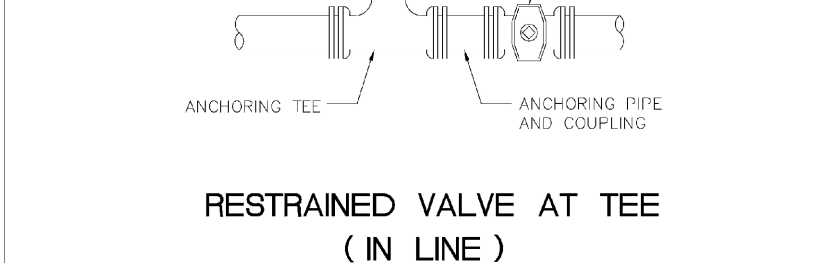


TYPICAL FIRE HYDRANT ASSEMBLY

ENGINEERING STANDARDS 2022			
REVISIONS	BY	DATE	ENGINEERING DIVISION
S.S.	04-2008		CITY OF POMPAÑO BEACH
S.S.	05-2009		
S.S.	11-2007		
S.S.	09-2013		
SCALE: N.T.S.			109-1

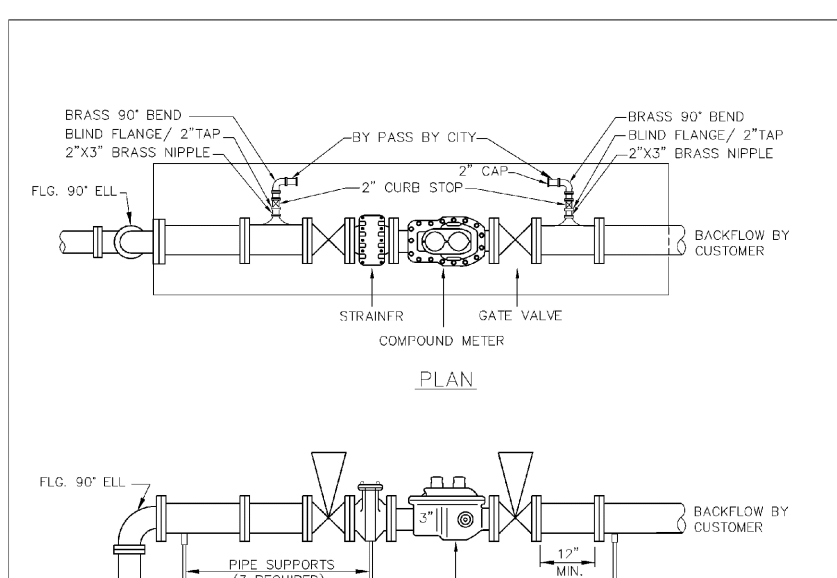


RESTRAINED VALVE AT TEE (BRANCH)



RESTRAINED VALVE AT TEE (IN LINE)

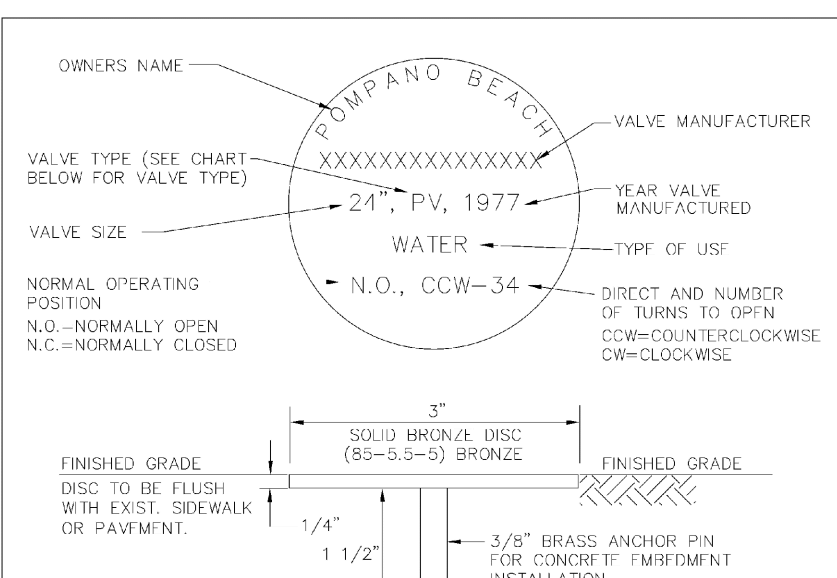
ENGINEERING STANDARDS 2022			
REVISIONS	BY	DATE	ENGINEERING DIVISION
S.S.	04-2008		CITY OF POMPAÑO BEACH
S.S.	05-2009		
S.S.	11-2007		
S.S.	09-2013		
SCALE: N.T.S.			111-1



DOMESTIC SERVICE ONLY

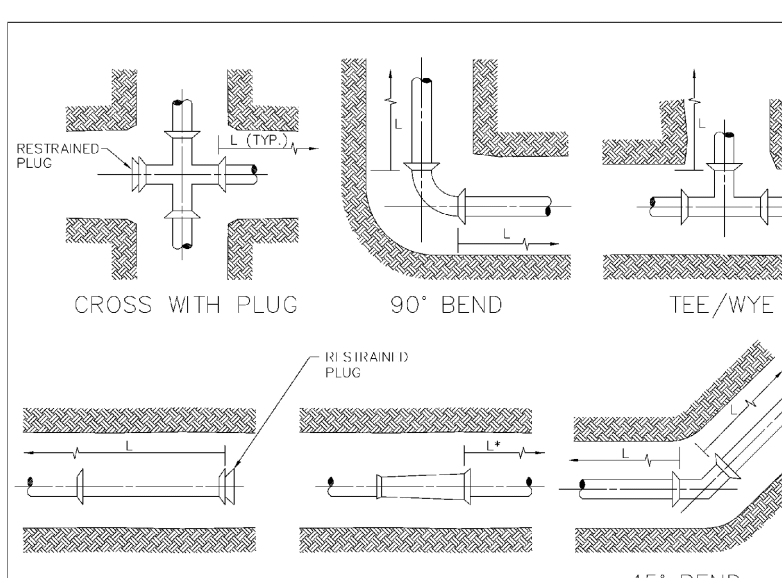
PLEASE SEE METER INSTALL DIMENSION LIST ON STANDARD NO. 106-4

ENGINEERING STANDARDS 2022			
REVISIONS	BY	DATE	ENGINEERING DIVISION
S.S.	04-2008		CITY OF POMPAÑO BEACH
S.S.	05-2009		
S.S.	11-2007		
S.S.	09-2013		
SCALE: N.T.S.			112-1



UNDERGROUND VALVE IDENTIFICATION MARKER

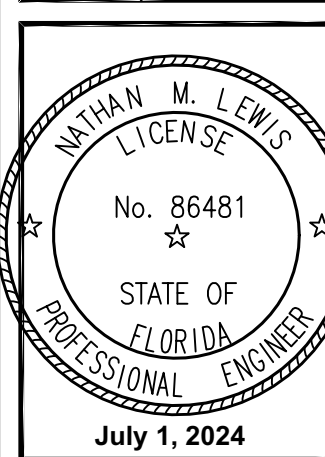
ENGINEERING STANDARDS 2022			
REVISIONS	BY	DATE	ENGINEERING DIVISION
S.S.	04-2008		CITY OF POMPAÑO BEACH
S.S.	05-2009		
S.S.	11-2007		
S.S.	09-2013		
SCALE: N.T.S.			115-1



RESTRAINED JOINT INFORMATION

ENGINEERING STANDARDS 2022			
REVISIONS	BY	DATE	ENGINEERING DIVISION
S.S.	04-2008		CITY OF POMPAÑO BEACH
S.S.	05-2009		
S.S.	11-2007		
S.S.	09-2013		
SCALE: N.T.S.			118-1

BTE REF DATE: 00.00.00	
REVISIONS	DATE
#	



THIS DOCUMENT HAS BEEN
DIGITALLY SIGNED AND
SEALED BY NATHAN M. LEWIS,
P.E. ON THE DATE ADJACENT
TO THE SEAL.

PRINTED COPIES OF THIS
DOCUMENT ARE NOT
CONSIDERED SIGNED AND
SEALED AND THE SIGNATURE
MUST BE VERIFIED ON ANY
ELECTRONIC COPIES.

Celebrating
15 Years

WATER AND SANITARY SEWER DETAILS
580 BRINY
580 Briny Ave
Pompano Beach, FL 33062

Botek Thurlow
Engineering, Inc.
3400 NW 9th Avenue, Suite 102, Ft. Lauderdale, FL 33309
www.botekthurlow-eng.com p: 954-568-8888 F: 954-568-0757

BTE PROJECT #:
22-0804

PROJECT DATE:
10-23-22

SHEET #:
C-2.1

AAC
PZ24-12000003
11/05/2024